


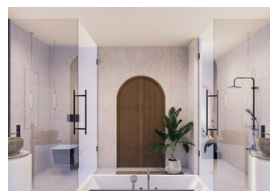




ABOUT THE PROPERTY

The Captain's Treasure has been masterfully designed to capture breathtaking views of the beach and ocean. The great room opens through six sets of French doors to a covered loggia and a pool garden with a hot tub and sun shelf fronting the beach. An open-air poolside cabana with swinging day beds perfectly oriented to enjoy spectacular views while the second-story covered porch catches refreshing ocean breezes.

-  3,500 sq ft
-  4 Bedroom
-  4.5 Bath
-  2 Car Port



Design Details & Finishes

PROPERTY & ARCHITECTURE

- Long eastern views over the beach
- Built-in speaker system in great room, master bedroom, and ground-floor guest suite
- Two-car garage

OUTDOOR LIVING

- Sun shelf
- Garden courtyard
- Pool garden with beach frontage
- Heated pool with integrated elevated Jacuzzi
- Poolside cabana with swinging day beds

INDOOR LIVING

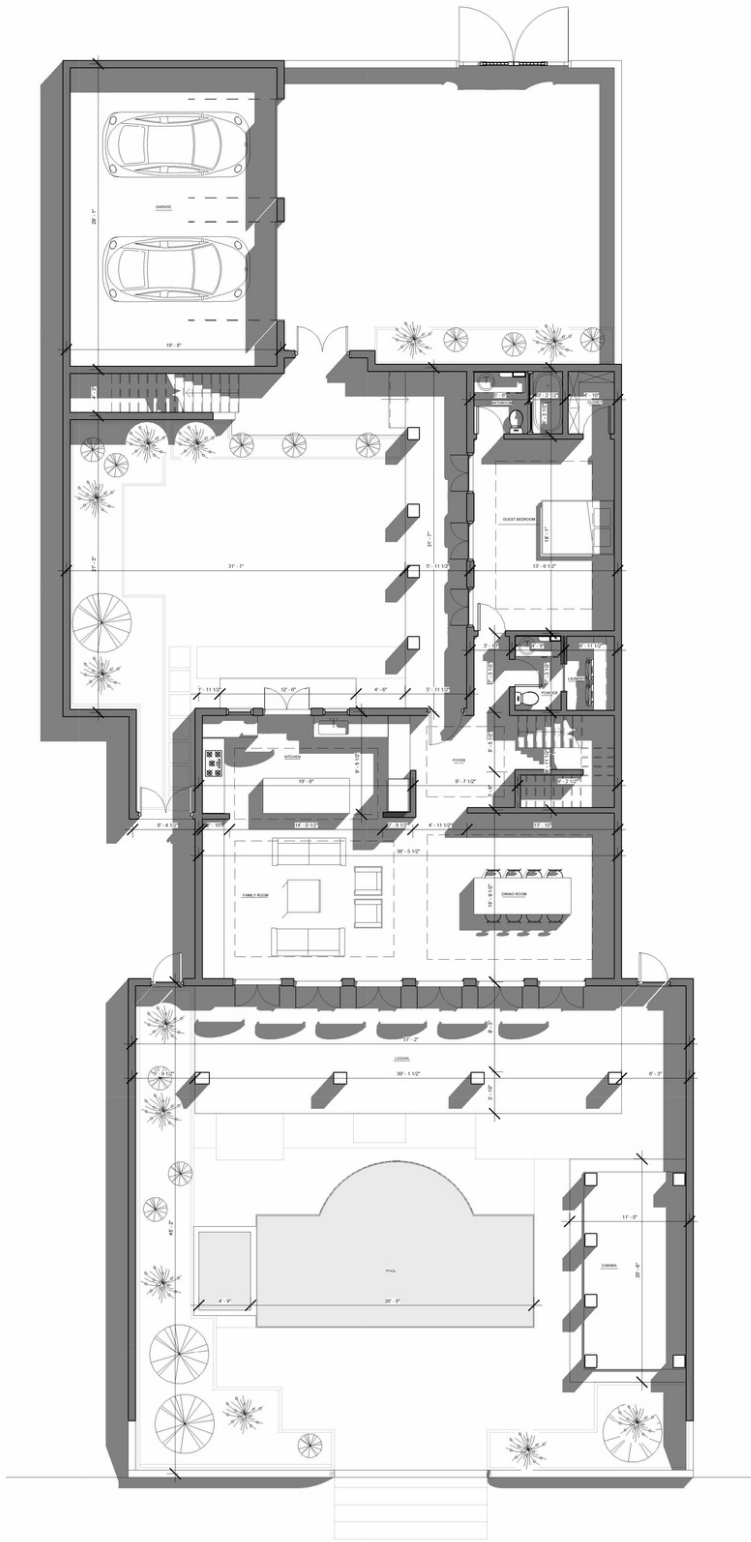
- Open-plan kitchen with top of the line appliances, and custom cerused-white-oak cabinetry
- Great room opens to pool garden through six sets of eight-foot tall French doors

MASTER SUITE

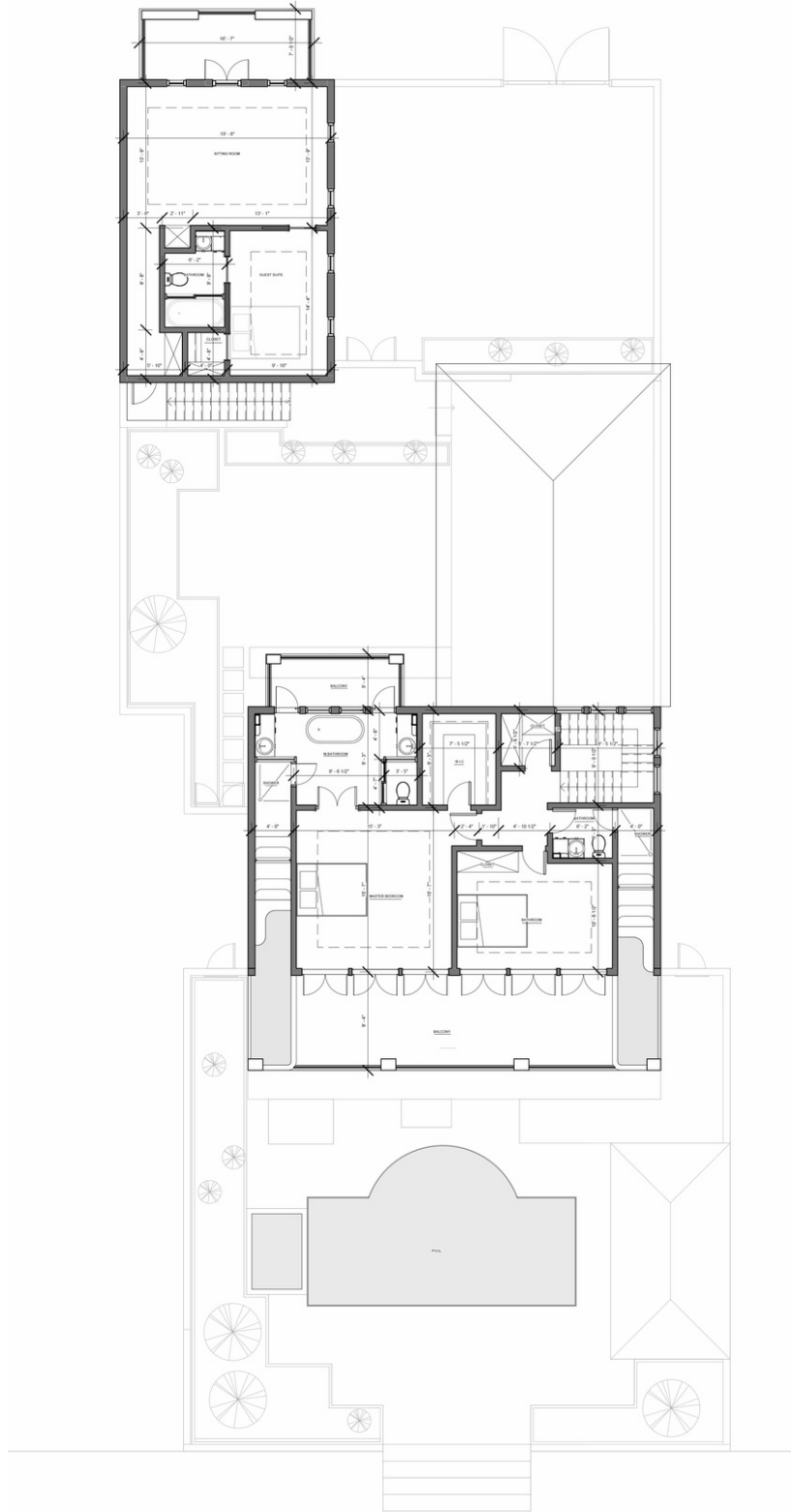
- Master bedroom with vaulted ceiling opens through two sets of French doors to a shared covered porch with long eastern views over the beach
- Master bathroom with a steam shower, soaking tub, WC, and marble floors opens to a private balcony overlooking the courtyard
- Walk-in closet
- Private grotto with swim-out infinity edge pool

GUEST SUITES

- Guest suite 1 on the ground floor, which can easily adapt as a home office, offers an en-suite bathroom and a walk-in closet and opens to the courtyard through three sets of French doors
- Guest suites 2 and 3 on the second-floor feature en-suite bathroom and open through two sets of French doors to a covered porch with beach views



1 1st Floor
1/8" = 1'-0"



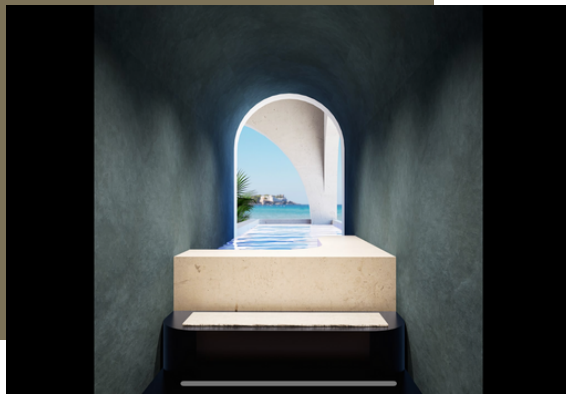
2 2ndFloor
1/8" = 1'-0"





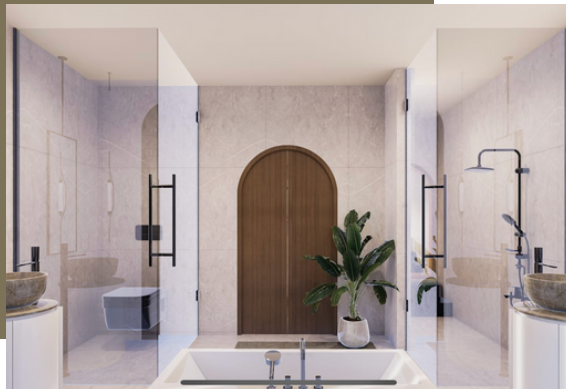
MODERN AND SPACIOUS BEDROOMS

Modern bedroom pieces are perfect to give you that luxury ambiance and experience.



SWIM OUT INFINITY-EDGE POOL

Both masters have their own grotto with a swim-out infinity edge overlooking the pool and beach.



MEDITERRANEAN INSPIRED BATHROOM

The design embraces influences from Santorini and Cycladic architecture. in